

Milk Processing Plant





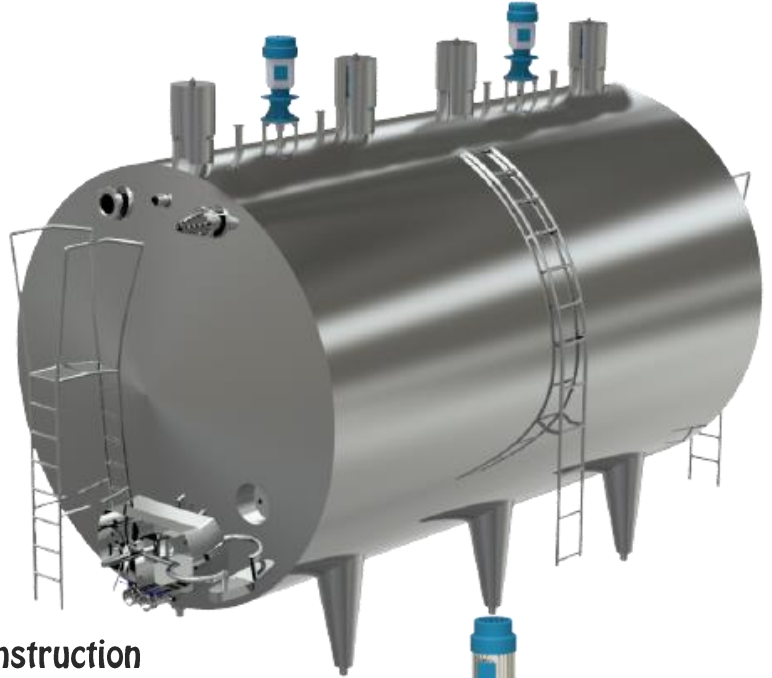
HTST MILK PASTEURIZER



- **HTST Pasteurizer for Milk, Juice and other liquid product**
- **Cap From 50 LPH 30,000 LPH**
- **Version Available with Manual/Automatic**
- **Skid mounted / Floor Mounted**



Tanks



- Tanks with SS 304 / SS 316 Construction
- PUF Insulation for better thermal stability
- Finished to the International Standard
- Rotary Spray Ball to cover the CIP all over the tank
- Fitted on the Legs with Adjustable Ball feet
- Agitator with Reputed make Geared Motor
- Air Vent with Hygienic Standard
- Level Transmitter as optional
- Temperature Transmitter & Temperature Indicator
- Outlet with Hygienic Valves.
- Constructed with 2000 L / 3000 L / 5000 L / 10,000 L

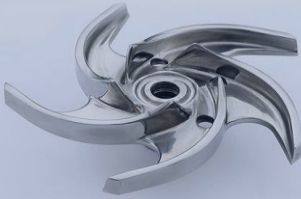


PLATE HEAT EXCHANGER SYSTEM

- Glue Free Gasket
- Hygienic Plates
- CIP Cleanable
- Plates are of SS 304/ SS 316
- Gasket are of NBR/EPDM



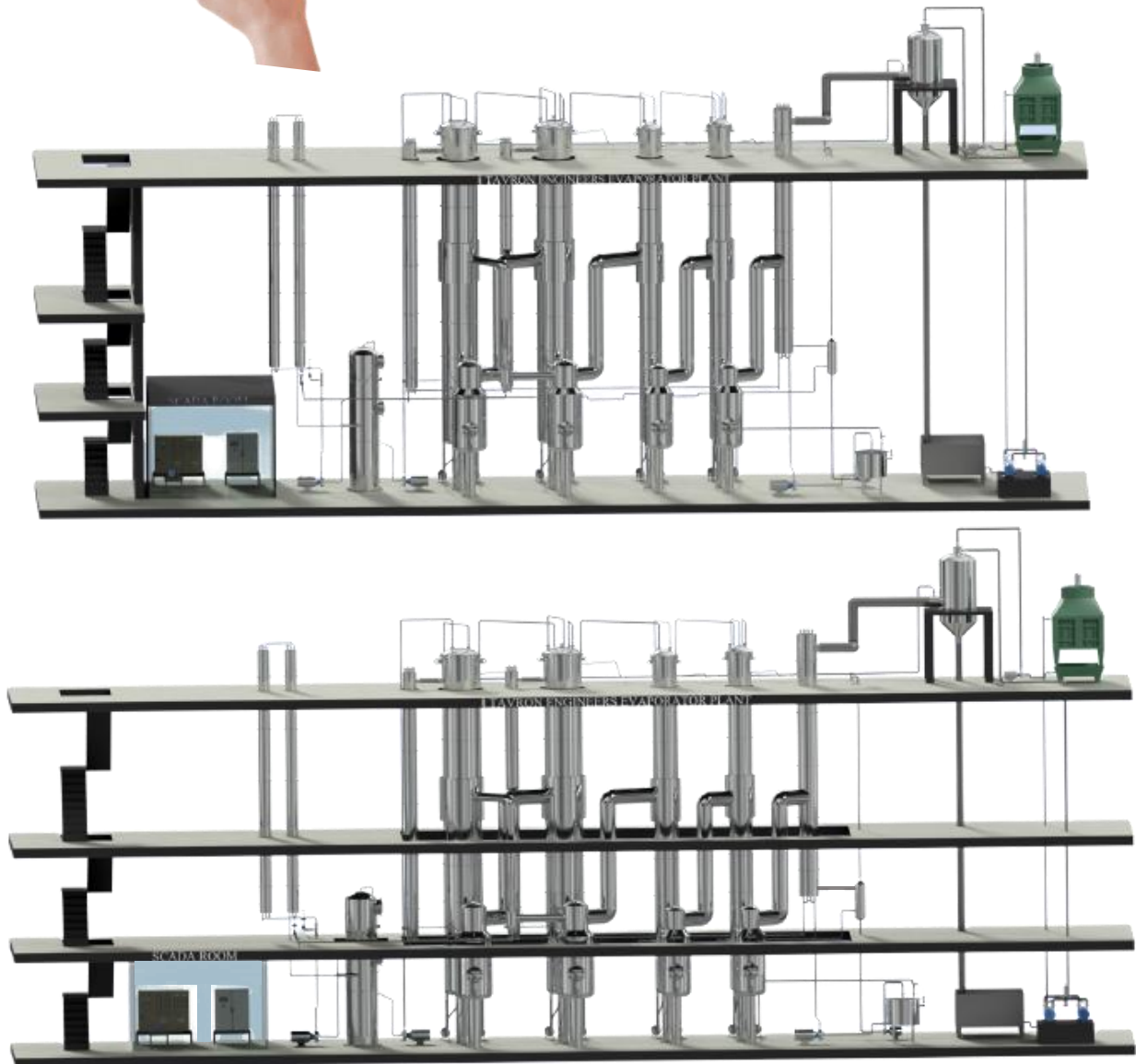
STAINLESS STEEL CENTRIFUGAL PUMPS



- Centrifugal type coupled to Electric motor / Monobloc version .
- Capacity 500 LPH to 1,00,000 LPH.
- Head up to 60 MWC .
- Applications transfer of various liquids .
- Material of construction SS 304 / SS 31 6 .
- Suitable for operation under vacuum
- open impeller design suitable to handle viscous products, pulps etc .
- Monobloc version. coupled to petrol or diesel engine are also available.



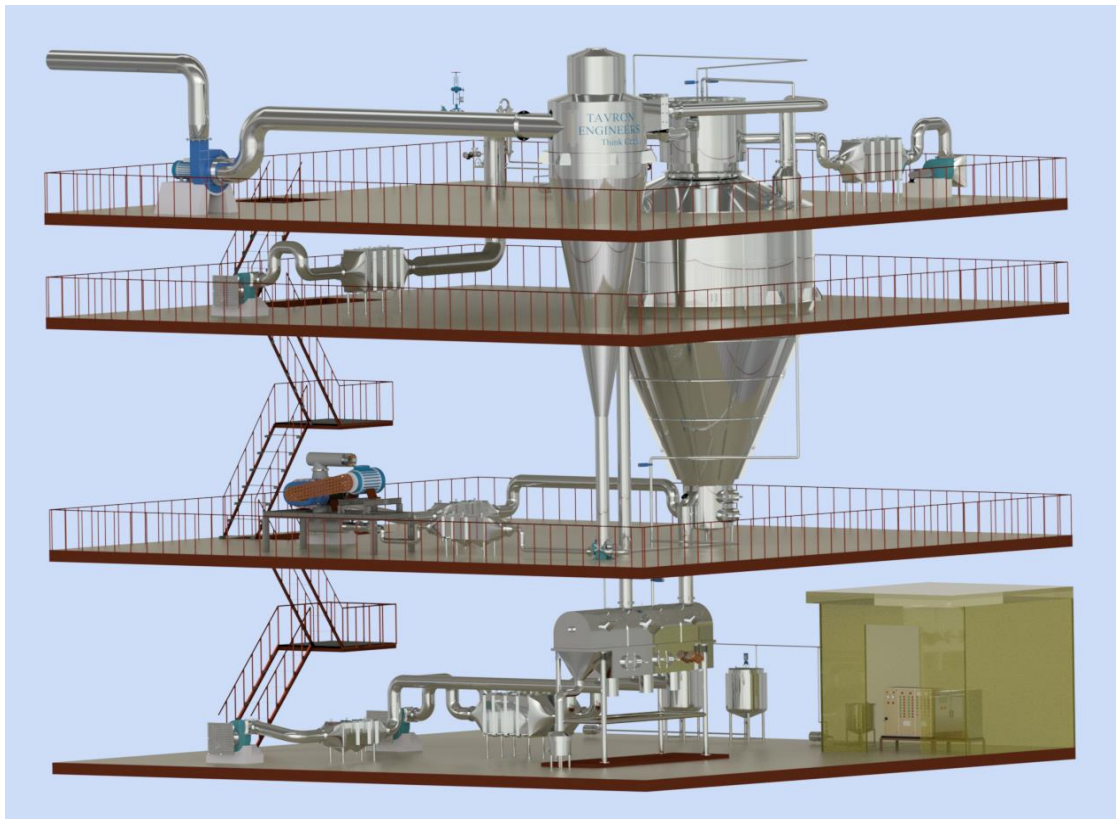
FALLING FILM EVAPORATOR



Spray Dryer



- Capacity from 5 Kg / Hr Water Evaporation to 1500 Kg / Hr Water Evaporation.
- Available with Rotary Atomizer, Nozzle and two fluid system.
- Material of construction SS 304 / SS 316.
- Second stage drying with Vibro fluid Bed Dryer.
- Three Stage Drying with Stationery Fluid Bed and vibro fluid bed.
- Available with the hot air producing system of steam, Direct or Indirect oil fired, Thermic fluid etc.
- Closed Loop Dryer is available on request for special application

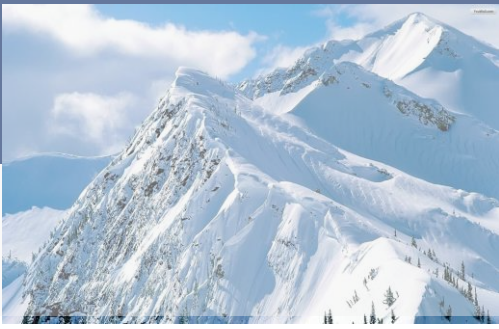


CIP System



- Suitable to Dairy / Beverage Industries
- Automatic and Semi automatic
- Single circuit to multi circuit
- SS 316 construction
- Reputed make valves
- PLC with SCADA system
- SKID Mounted
- User friendly
- Highly Efficient





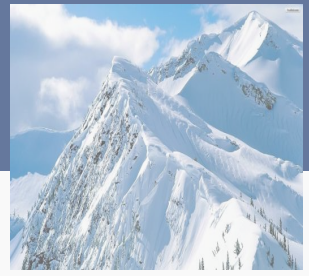
IBT System



- Designed with R22 , R404 A , other Freon based Gas on request
- To handle the milk from 1000 LPD to 20,000 LPD
- Mild steel or Stainless Steel construction
- Scroll or Reciprocating Compressor
- PLC based controls on optional



Ammonia IBT System



- Designed with Ammonia-NH₃
- To handle the milk from 10,000 LPD to 5,00,000 LPD beyond this will be designed on request.
- Atmospheric / Shell & Tube / Plate Type / Evaporative Condenser
- IBT System to have enough ice storage to handle designed capacity of milk
- Return water Chiller as optional
- Falling Film Chiller as optional
- Glycol System as optional
- PLC based controls on optional



HEAD OFFICE TAVRON ENGINEERS

AF-1 Aiswariyam, 25 A Redhills Road,
Kolathur, Chennai - 600 099, India.
Tel:- +91 44 25567211.
Mobile : +91 9444015442.
Email:- sales@tavron.net
Website: www.tavron.net

FACTORY TAVRON ENGINEERS

38-42 Arulmurugan Nagar, Vichoor Post,
Manali New Town, Chennai - 600 103.
Tel: +91 9176610727.
Email: factory@tavron.net